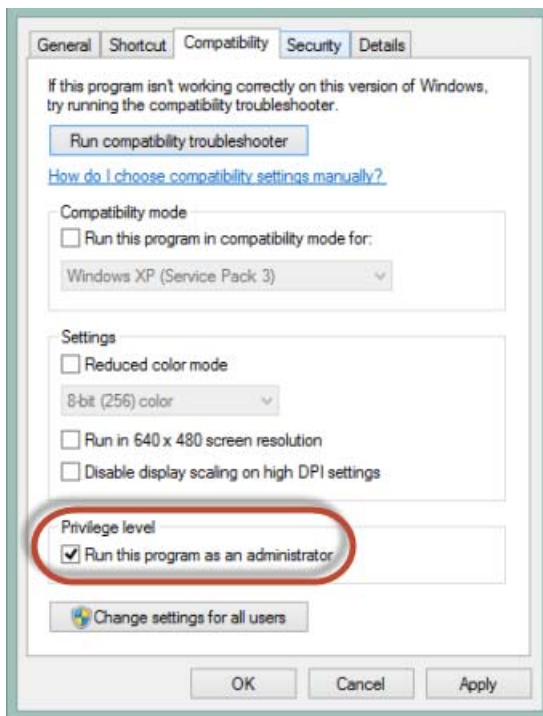


1. First, make sure the firmware type of your scan engine is Command Mode. This kind of firmware version will always ends with “.CMD”. If you have problem in checking the firmware type, please contact our sales representative.
2. Please install your scan engine on the demo board and connect the host with the RS232 cable.
3. Install BEO by double-clicking [BEO-setup\\_3.02.exe](#).
4. After successful installation, go to the Properties window of [BEO.exe](#), check the box saying “Run this program as an administrator” and click OK.

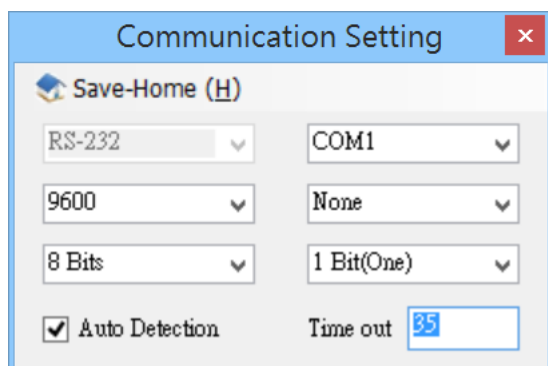


5. Enter Device Manager and check which COM port is currently occupied by the scan engine, which is COM1 by default if you're using RS232 cable.
6. Enter BEO by double-clicking the shortcut icon on the desktop.

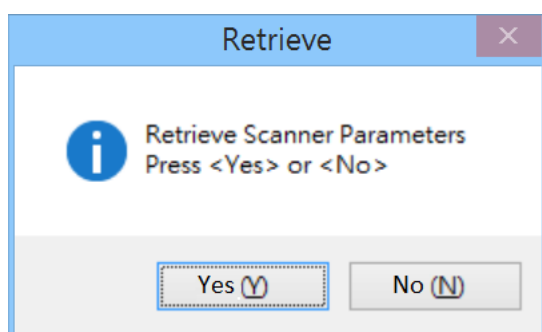


### **BEO Configuration Guide**

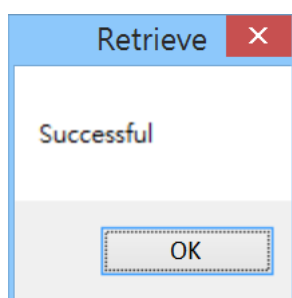
7. A Communication Setting window will pop up. Set 9600, 8, N, 1 as protocols and COM# as appropriate and then click [Save-Home]



8. Click [Yes] to retrieve Parameters from the scan engine connected.

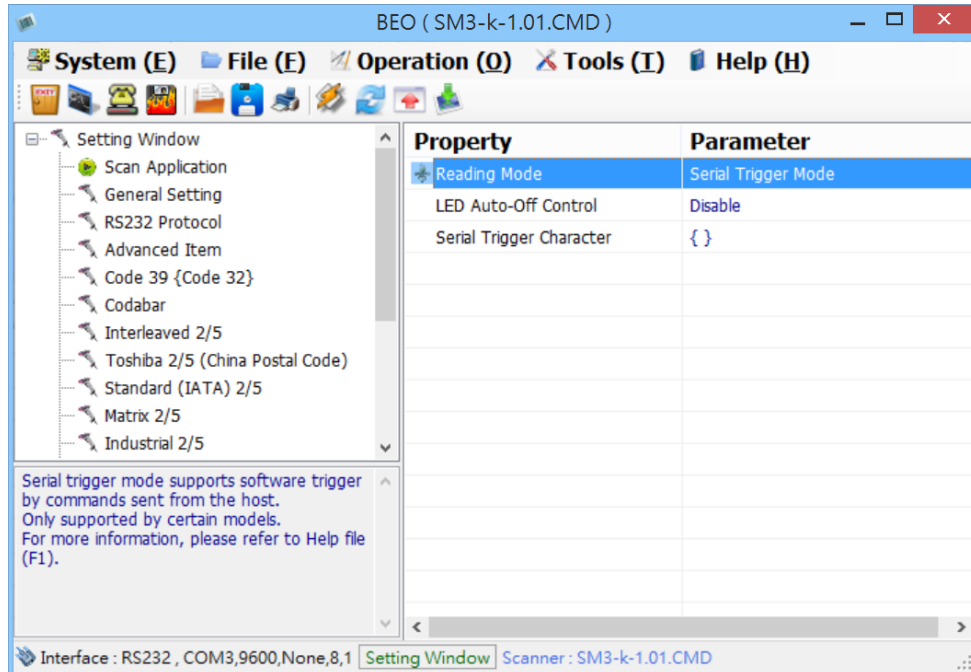


9. This dialog will show up to confirm the retrieval is successful



## BEO Configuration Guide


10. Now you may configure any parameters of the scan engine. For example, if you want to configure to Serial Trigger Mode (in which the scan engine will be triggered by software command instead of hardware signal), go to **Setting Window > Scan Application**, and double-click **Reading Mode** and select **Serial Trigger Mode**.



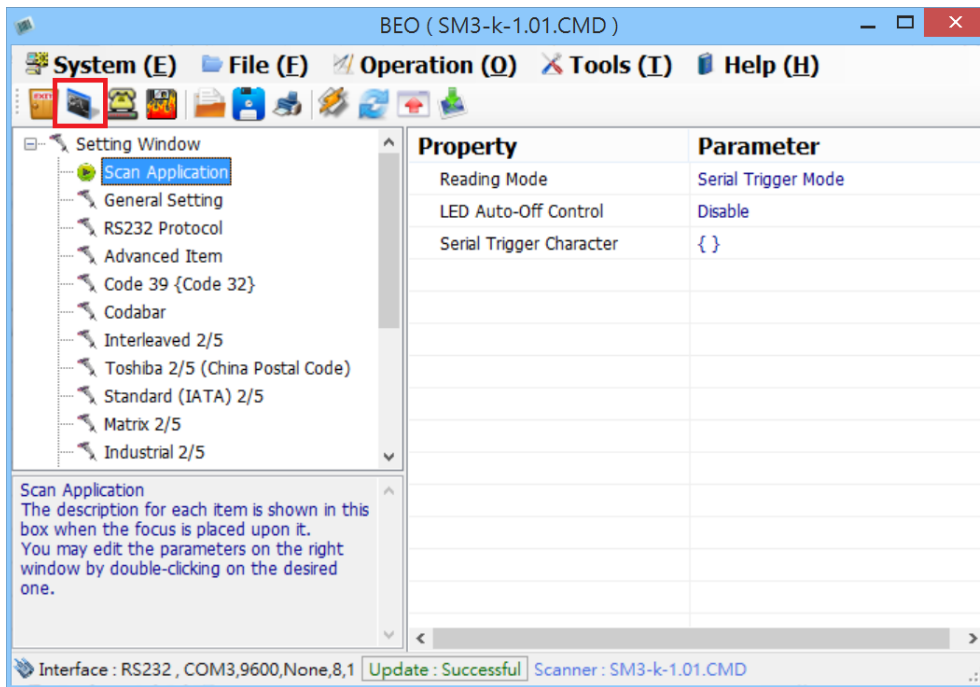
By doing this, you will set the scanner to Serial Trigger Mode (Software Trigger), with the default software trigger command as “{ }”.



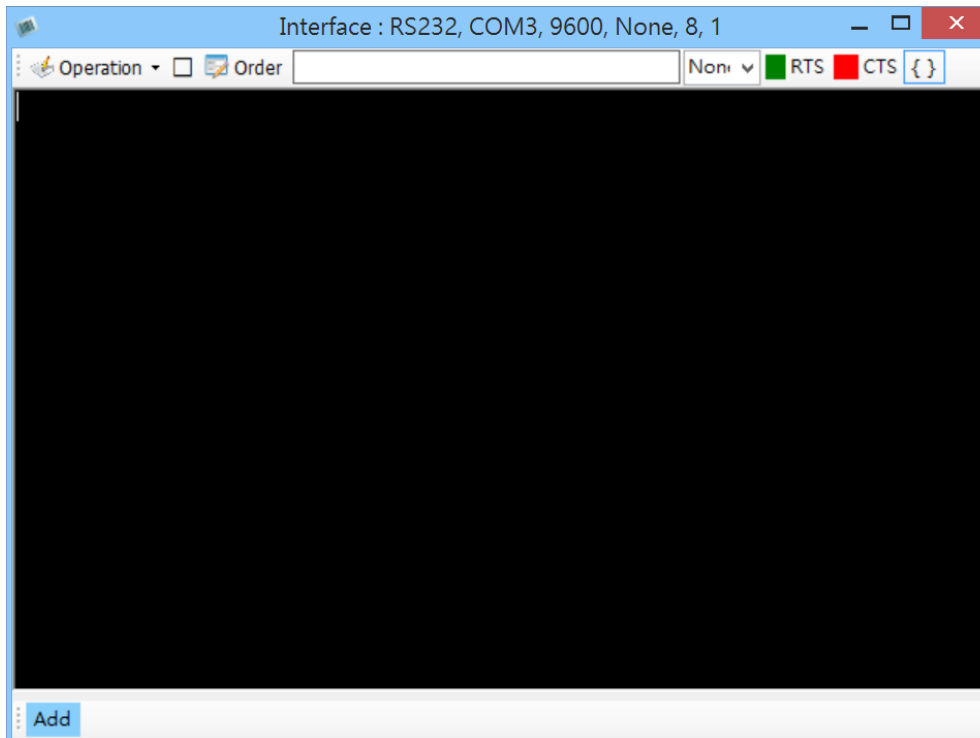
- 
- BEO ( SM3-k-1.01.CMD )
- System (E) File (E) Operation (O) Tools (I) Help (H)
- Setting Window
- Scan Application
    - General Setting
    - RS232 Protocol
    - Advanced Item
    - Code 39 {Code 32}
    - Codabar
    - Interleaved 2/5
    - Toshiba 2/5 (China Postal Code)
    - Standard (IATA) 2/5
    - Matrix 2/5
    - Industrial 2/5
- Property
- | Property                 | Parameter           |
|--------------------------|---------------------|
| Reading Mode             | Serial Trigger Mode |
| LED Auto-Off Control     | Disable             |
| Serial Trigger Character | { }                 |
- Scan Application
- The description for each item is shown in this box when the focus is placed upon it.  
You may edit the parameters on the right window by double-clicking on the desired one.
- Interface : RS232 , COM3,9600,None,8,1 Setting Window Scanner : SM3-k-1.01.CMD

- 
- Update Successful
- OK

13. Now, click on the Test Window icon in the toolbar.



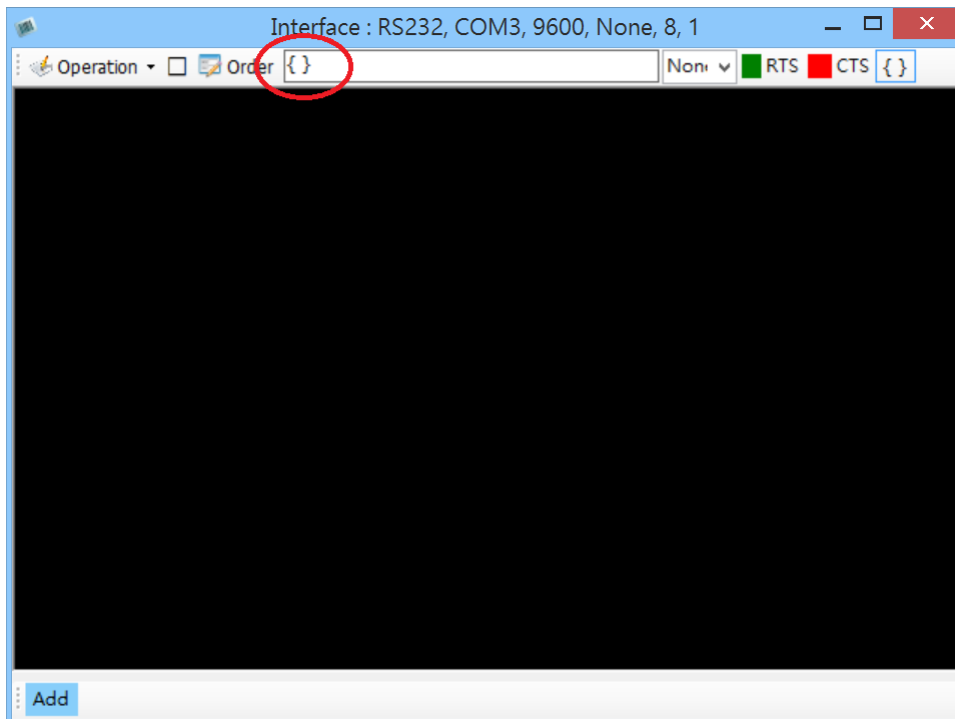
14. Test Window will show up. This window can help you conduct 2-way communication test.



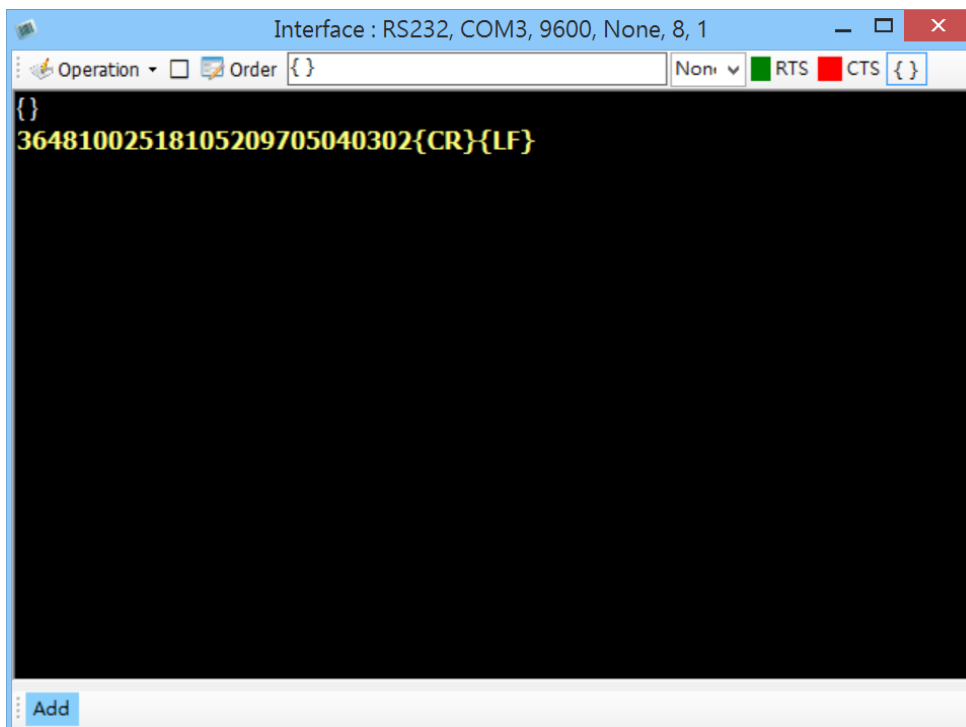


### ***BEO Configuration Guide***

15. Input “{ }” in the command field as software trigger command. Press [Enter] to send.



16. The scan engine will be triggered immediately. If a barcode is being read, the barcode data will be displayed right below the “{ }” software command in different color.





### **BEO Configuration Guide**

17. If you are finished with the testing, you can exit the test window and move on to learn what actual command string is required to be sent to configure the scan engine, so that you can integrate the scan engine into your host system.
18. Click [Help] in Menu Bar or simply press [F1] to access Help file. Go to **Test Window > Command Operation**. This page describes detailed structure of a command string. For example, if you want to know what command string is required for “Serial Trigger Mode”, scroll down a little bit and enter **Reading Mode** by clicking the hyperlink.
19. In the Reading Mode page, you can realize that the command string for configuring Reading Mode is “{MC01WT1}” by default, which means Trigger Mode. To configure to Serial Trigger Mode, simply replace the last “1” by “6”, so the complete command string for Serial Trigger Mode is “{MC01WT6}”.

Property	Option	Remark
Reading Mode {MC01WT1}	0 Flash Mode 1 Trigger Mode 2 Toggle Mode 3 Test Mode 4 Continuous Mode 5 Continuous Auto Off Mode 6 Serial Trigger Mode 7 Auto Sensing Mode	Default : Trigger Mode Serial Trigger Mode : Only supported by certain models

That is, all your host system needs to send to the scan engine is “{MC01WT6}” and the scan engine will be successfully configured to Serial Trigger Mode.